

CHKB-S 8300 SERIES

HYDRAULIC SAFE-T-LIP DOCK LEVELLER

Push-button operation

Safe and simple push-button activation.

Micro-processor controls

Modules can be personalized to meet your operating requirements.

LED communication

LED displays internally and externally communicate the actual operating status of the dock leveller.

Return to dock position

Push-button controlled, giving safe fork-lift truck cross-traffic.

Durable platform construction

Beam spacing of platform is designed for use with a variety of material handling equipment.

Safe-T-Lip barrier (130 mm)

Designed to stop a 45 kN fork-lift truck travelling at 5 km/h.

Unobstructed end-load access

The exclusive retractable lip design allows the barrier to move out of the way so you can handle end loads.

Frame construction

Various hang-in frame options to suit your application. Available as pit model or dock box model.

Hydraulic reliability

Hydraulic positioning of both platform and hinge lip ensures high reliability and low maintenance.

Maintenance support strut

To support the platform and lip during service and maintenance.



EASY, PRODUCTIVE AND RELIABLE OPERATION WITH THE SAFEST DOCK LEVELLER IN THE INDUSTRY

Rite-Hite Safe-T-Lip dock levellers provide full-time protection against fork-lift trucks falling off a vacant loading dock. The 130 mm high barrier is an integral part of the dock leveller and stops a 45 kN fork-lift truck travelling at 5 km/h.



Protect your employees from vacant loading dock drop-off.

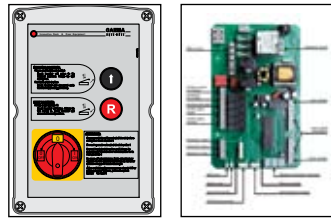


The barrier is automatically positioned when returned to the stored position after completion of the loading operation.



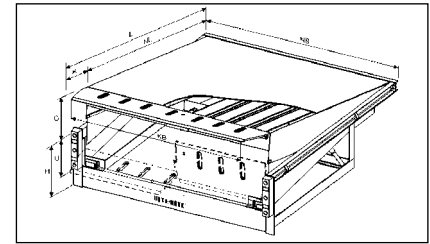
The unique slotted Safe-T-Lip design ensures automatic positioning of the barrier when the dock leveller is returned to the rest position.

Micro-processor controls with internal and external LED communication and return to dock position as standard features.



Nominal dimensions

Capacity EN 1398 T (kN)	Capacity Safe-T-Lip KT (kN)
60	45 at 5 km/h
80	
100	



Operation

To raise the platform, push and hold the raise button on the control box. The platform will rise up and the lip will automatically extend. Release the push-button to lower the dock leveller platform and lip to the trailer bed. After completion of the loading operation, the dock leveller can be returned to the stored position manually (deadman control) by pushing and holding the R button or automatically by giving the R button a pulse signal.

The Safe-T-Lip barrier will be automatically positioned to ensure full-time protection against fork-lift trucks falling off a vacant loading dock. Clear operating instructions in the local language are included. The platform is designed to compensate for canted truck beds up to 100 mm and remains flush with the rear of the pit to eliminate pinch points. The hinge lip is yieldable.

Hydraulic system

The platform is raised by two hydraulic cylinders with built-in velocity fuse (free-fall protection). The lip is extended by a hydraulic cylinder. The hydraulic pump, manifold and oil reservoir are contained in an integral assembly, which is fitted to the front of the platform for easy maintenance.

Electrical system

The electrical system consists of a IP 54 enclosure with two push-buttons (raise and return) and a rotary lockable main power switch. The micro-processor controls allow for easy adjustments by using personalized modules (PEEP). The internal LED display and external service LED communicate the actual operating status of the dock leveller. The enclosed 0.75 kW motor is rated at 3x400V+N+E, 50 Hz. All electrical components, connections, wiring and control box are CE listed.

Nominal Length NL (mm)	Safe-T-Lip Extended K (mm)	Total Length L (mm)	Service Range Up O (mm)	Service Range Down U (mm)	Closed Height H (mm)
2000	450	2450	350	300	600
2500	450	2950	350	300	600
3000	450	3450	350	300	600
3500	450	3950	460	300	700
4000	450	4450	460	300	700
4500	450	4950	460	300	700

Standard features

- ▶ Compliant with ZH 1/156 and EN 1398
- ▶ Anti-slip deck plate, tread plate
- ▶ Hinge lip: Safe-T-Lip barrier
- ▶ Unobstructed end loading at below dock level (no barrier positioned)
- ▶ Hydraulic system includes:
 - ▶ Hydraulic emergency stop
 - ▶ Automatic height adjustment
- ▶ Electrical system includes:
 - ▶ Micro-processor controls 400/230V, 24V secondary voltage
 - ▶ Automatic stop after power failure or emergency stop
 - ▶ 2 Push-button operation with return to dock position
 - ▶ Power cables, adjusted to pit size
- ▶ Steel construction painted RAL 7016
- ▶ Yellow/black warning stripes on integral toeuard
- ▶ 2 Rubber bumper 400x90x80 mm

Nominal Width NB (mm)	Safe-T-Lip Width KB*1 (mm)	Tapered Lip (mm)
1500	1500	Option
1750	1750	Option
2000	1950	2/25/115
2250	1950	2/80/400

KB*1 Applies for all nominal lengths

Options

- ▶ Dock box
- ▶ Zinc-plated finish
- ▶ PVC/brush 3-sided weatherseals
- ▶ Foam insulation – Styrodur
- ▶ IGLU 1600 insulation – ISO panel
- ▶ Abrasive ramp surface - KVS
- ▶ RAL colour of choice
- ▶ Rubber bumper 500x250x80 mm
- ▶ Rubber bumper 500x250x140 mm
- ▶ Steel faced bumpers
- ▶ Other options are available on request

CAEMA
RITE-HITE

CAEMA Verladessysteme GmbH
Carl-Zeiss-Strasse 3
34471 Volkmarsen
Germany
Tel. +49 (0) 5693 9870-0
Fax +49 (0) 5693 987020

www.caema-ritehite.com

RITE-HITE

Rite-Hite Corporation
8900 North Arbon Drive
Milwaukee, WI 53223
USA
Tel. +1 (414) 355 2600
Fax +1 (414) 355 9248

www.ritehite.com

CALJAN
RITE-HITE

Caljan Rite-Hite ApS
Ved Milepaelen 6-8
8361 Hasselager
Denmark
Tel. +45 8738 7800
Fax +45 8738 7801

www.caljanritehite.com